



Bledisloe Way

Lydney, GL15 5GF

£250,000



A well presented and well-proportioned three bedroom mid terraced, three-storey townhouse, benefitting from bright and spacious living accommodation throughout.

The property offers a large, light-filled lounge, three good sized bedrooms with the master benefitting from en-suite facilities, a private rear garden and off-road parking. Positioned with a pleasant outlook to the front and being sold with no onward chain.

Lydney has many amenities to include primary schools, secondary school, supermarkets, independent cafes and shops, doctors surgeries, pharmacies and parks. There are excellent transport links to the nearby towns and cities with a bus station and train station.



The property is accessed via a partly glazed UPVC door into:

Entrance Hallway:

6'6 x 15 (1.98m x 4.57m)

Radiator, power points, stairs to first floor landing, storage cupboard and doors leading to kitchen, cloakroom and lounge.

Kitchen:

8'10 x 9'3 (2.69m x 2.82m)

Front aspect UPVC double glazed window, range of wall, base and drawer units, built-in oven, four ring gas hob with extractor fan over, integrated fridge freezer, space and plumbing for washing machine, built-in dishwasher, radiator, power points and wall-mounted boiler.

W.C:

8'2 x 3'6 (2.49m x 1.07m)

Close-coupled WC, wash hand basin with tiled splashback, radiator and extractor fan.

Lounge:

16 x 14'7 (4.88m x 4.45m)

A bright and spacious room with rear aspect UPVC double glazed patio doors leading out to the garden, additional rear aspect UPVC double glazed windows and two Velux windows allowing

plenty of natural light. Radiator, power points and TV points.

First Floor Landing:

3'6 x 11'7 (1.07m x 3.53m)

Rear aspect UPVC double glazed window, power points and doors leading to:

Bedroom Two:

8'7 x 10'7 (2.62m x 3.23m)

Front aspect UPVC double glazed window, radiator and power points.

Bedroom Three:

8'7 x 7'8 (2.62m x 2.34m)

Rear aspect UPVC double glazed window, radiator and power points.

Bathroom:

6'10 x 5'8 (2.08m x 1.73m)

Front aspect UPVC double glazed frosted window, panelled bath with mixer taps and shower attachment over, close-coupled WC, wash hand basin, heated towel rail, shaver point and extractor fan.

Second Floor Landing:

5'1 x 5'6 (1.55m x 1.68m)

Rear aspect Velux window, radiator, power points and door leading to:

Bedroom One:

11'3 x 18'10 (3.43m x 5.74m)

A spacious master bedroom with rear aspect UPVC double glazed window and front aspect patio doors opening onto a Juliet balcony, fitted double wardrobe with hanging and shelving space, radiator, power points and TV point. Door leading to:

En-Suite:

4'2 x 7'3 (1.27m x 2.21m)

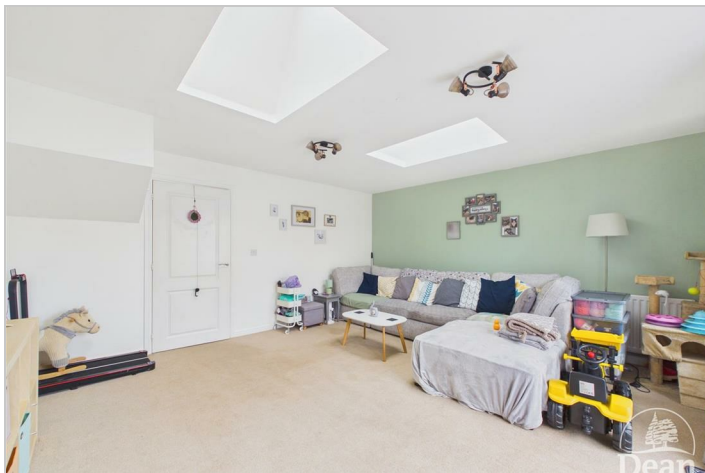
Walk-in shower with electric shower, close-coupled WC, wash hand basin with tiled

splashback, radiator, shaver point and extractor fan.

Outside:

To the front, the property benefits from off-road parking for one vehicle and a pathway leading to the entrance door.

To the rear, the garden comprises a patio and pathway area leading to a laid to lawn section, with a garden shed and rear access gate, all enclosed by fencing.



Consumer Notes: Dean Estate Agents Ltd have prepared the information within this website/brochure with care and co-operation from the seller. It is intended to be indicative rather than definitive, without a guarantee of accuracy. Before you act upon any information provided, we request that you satisfy yourself about the completeness, accuracy, reliability, suitability or availability with respect to the website or the information, products, services, or related graphics contained on the website for any purpose.

These details do not constitute any part of any Offer, Contract or Tenancy Agreement.

Photographs used for advertising purposes may not necessarily be the most recent photographs, although every effort is made to update photographs at the earliest opportunity. Any reliance you place on such information is therefore strictly at your own risk. All photographic images are under the ownership of Dean Estate Agents Ltd and therefore Dean Estate Agents retain the copyright. You must obtain permission from the owner of the images to reproduce them.

Tenanted Property – we are not always able to show the most recent condition of a property due to tenants' privacy and we may choose to show the photographs of the property when it was last vacant to at least allow clients some idea of the internal condition. Therefore, we would of course, urge you to view before making any decisions to purchase or rent the property and before any costs.

Energy Performance Certificates are supplied to us via a third party and we do not accept responsibility for the content within such reports.

PRC Certificates – Some ex-local authority properties have been repaired in recent years using the PRC Scheme wherein a certificate has been produced by a qualified property engineer. This certificate does not imply the suitability for a mortgage approval and you must satisfy yourself of the work carried out that may meet your lenders criteria.

As with leasehold property or new build development sites, you are likely to be responsible for a contribution to management charges and/or ground rent or a contribution to the development service charge. Please enquire at the time of viewing.

You may also incur fees for items such as leasehold packs and, in addition, you will also need to check the remaining length of any lease before you complete a mortgage application form.

Please ask a member of our team for any help required before committing to purchase a property and incurring expense.

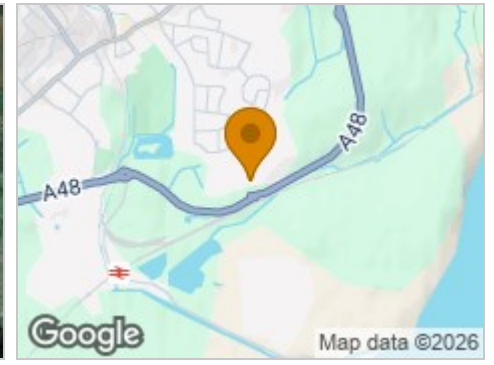
Road Map



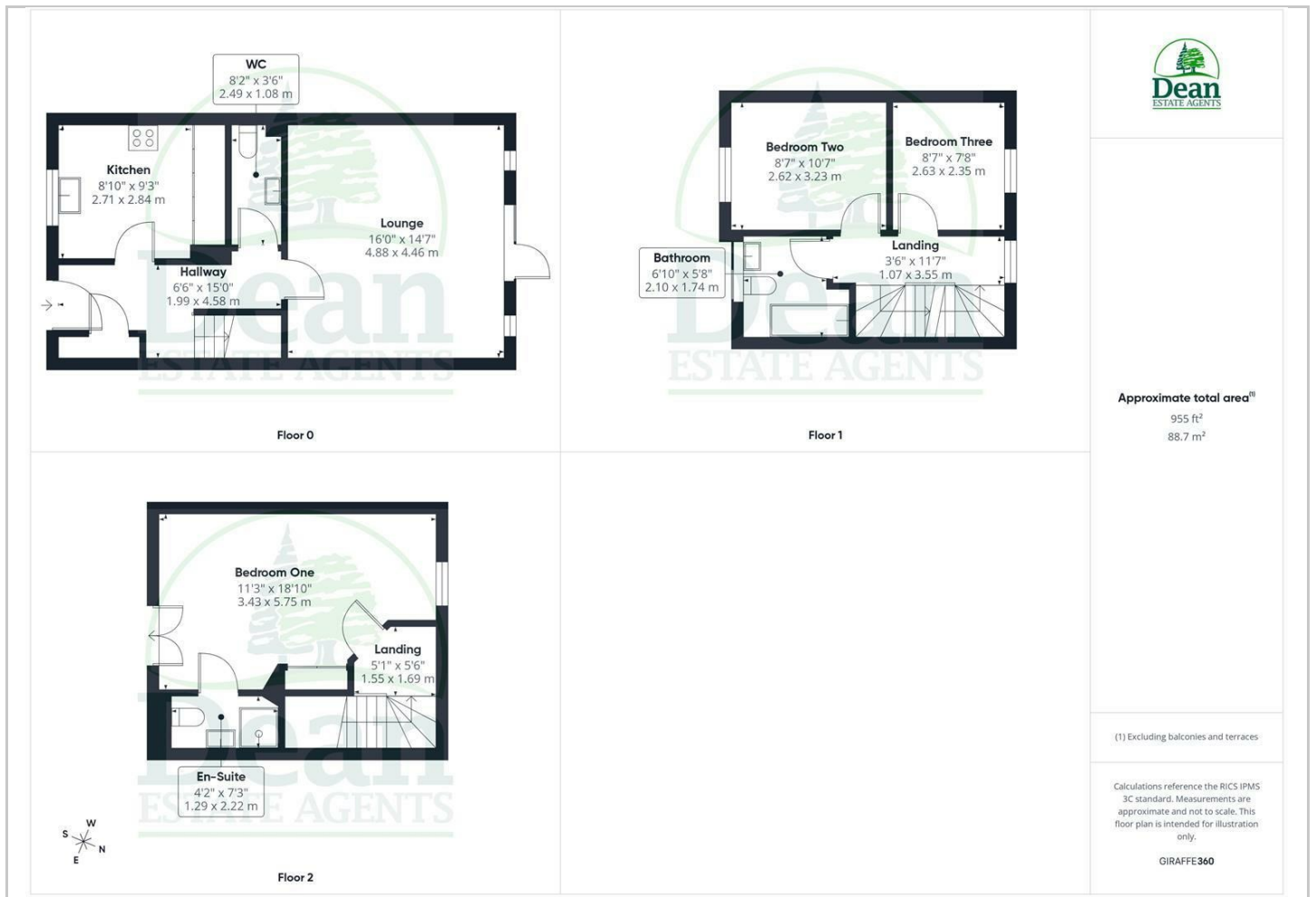
Hybrid Map



Terrain Map



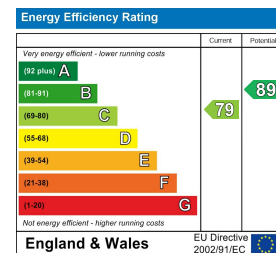
Floor Plan



Viewing

Please contact our Lydney Office on 01594 368202 if you wish to arrange a viewing appointment for this property or require further information.

Energy Efficiency Graph



These particulars, whilst believed to be accurate are set out as a general outline only for guidance and do not constitute any part of an offer or contract. Intending purchasers should not rely on them as statements of representation of fact, but must satisfy themselves by inspection or otherwise as to their accuracy. No person in this firm's employment has the authority to make or give any representation or warranty in respect of the property.